

# HTX-243RES

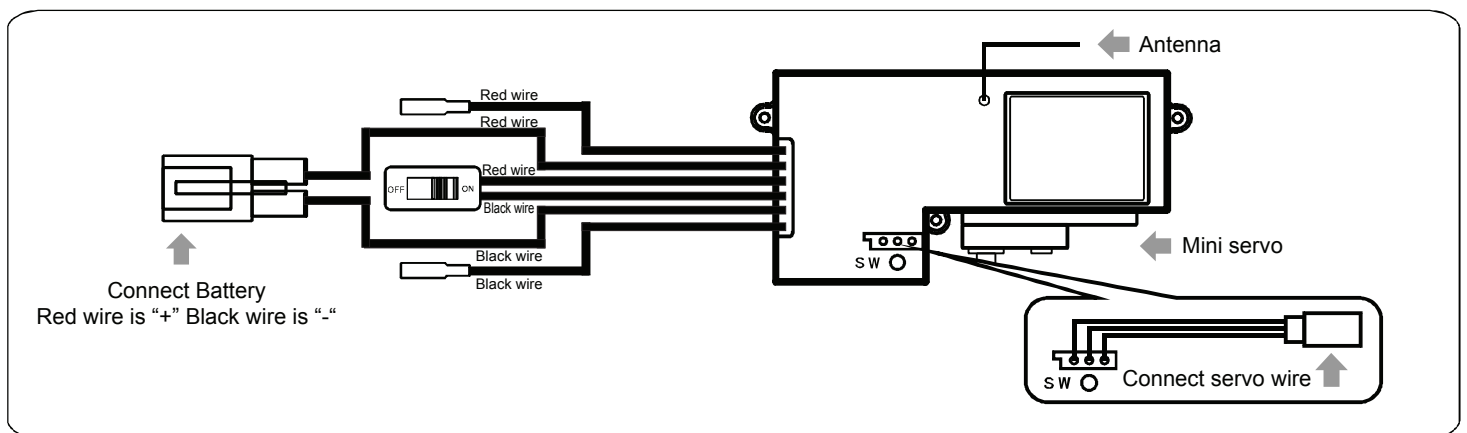
## Features

2 in 1 Receiver/Esc Easy to operate

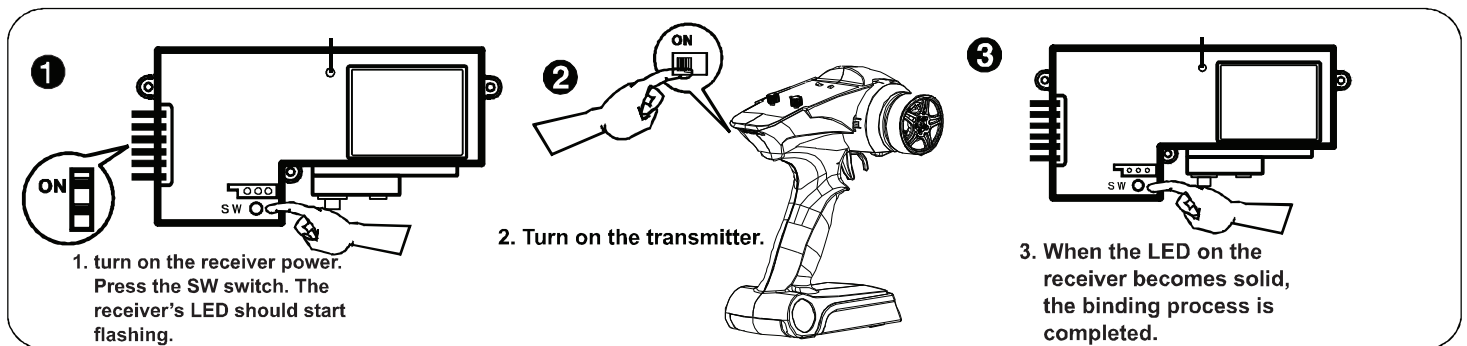
## Specifications

- Input voltage : 6V-8. 4V DC
- BEC : 5V 1A
- Output current : Continuously 20A, Instantly 150A
- Size : L68.5mm \* W32.5mm \* H22mm
- Motor : High Power 370/20T motor

## Wiring diagram



## Binding the transmitter and receiver

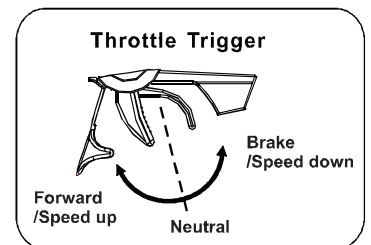


## Functional Description

1. Push the trigger forward to slow down or brake.
2. Pull the trigger backward to accelerate.

**Throttle Trim:** Position the throttle trigger at the neutral position, adjust the throttle trim accordingly.

**Steering Trim:** If the front wheel does not align straight, use the steering trim to make adjustment

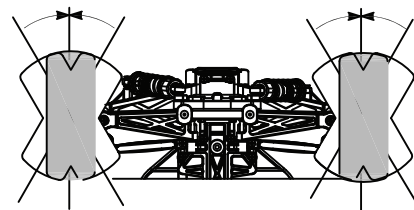
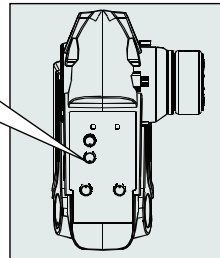
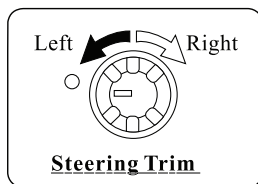
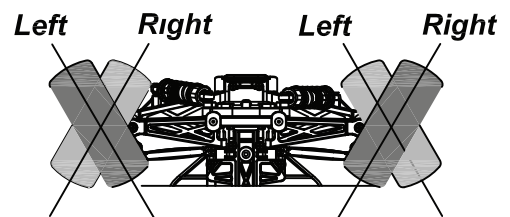
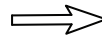
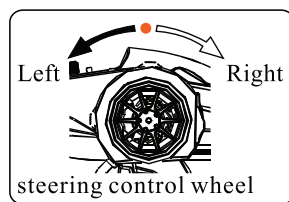


## Note

This product has a water resistance function

# Operation Check List

1. Install fresh, new batteries into the transmitter and vehicle. Verify all the control functions are working properly.
2. Verify steering is set to the neutral position, the front wheels of the vehicle should point straight forward when the steering wheel on the transmitter is centered.
3. The ESC on the vehicle is pre-configured at the factory. When you turn on the transmitter and vehicle, you should hear a beep in 1-2 seconds and the indicator light should be lit.
4. With the battery fully charged, the run time for the vehicle is around 7 to 15 minutes depends on the condition of the running environment. Please stop operation when the battery show sign of low power.



## Common Troubleshooting

**Problem:** Motor is not working

**Causes:** A broken motor coil, battery capacity is inadequate or not charged, remote control not turned on or esc switch not turned on.

**Solution:** Replace motor, change batteries, turn switches on

**Problem:** Poor motor performance

**Causes:** Battery power is low, ESC (Electric speed control) is not adjusted properly, drive train loosened.

**Solution:** Replace or recharge the battery. When you first turn on the car, don't touch throttle trigger until all noise stop. Check that the gear mesh is not too tight or loose.

**Problem:** Difficult to steer the car

**Causes:** Transmitter or receiver battery are low, steering servo trim not set correctly

**Solution:** Replace or recharge the battery; when car is not moving, manually set steering trim so that the wheels are pointed forward.